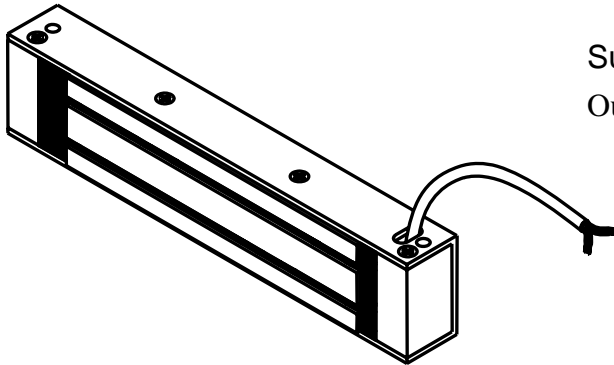


ELECTROMAGNETIC LOCK INSTALLATION INSTRUCTION

EL-350



Suitable for:
Out-swing door•Drawer•Dresser...

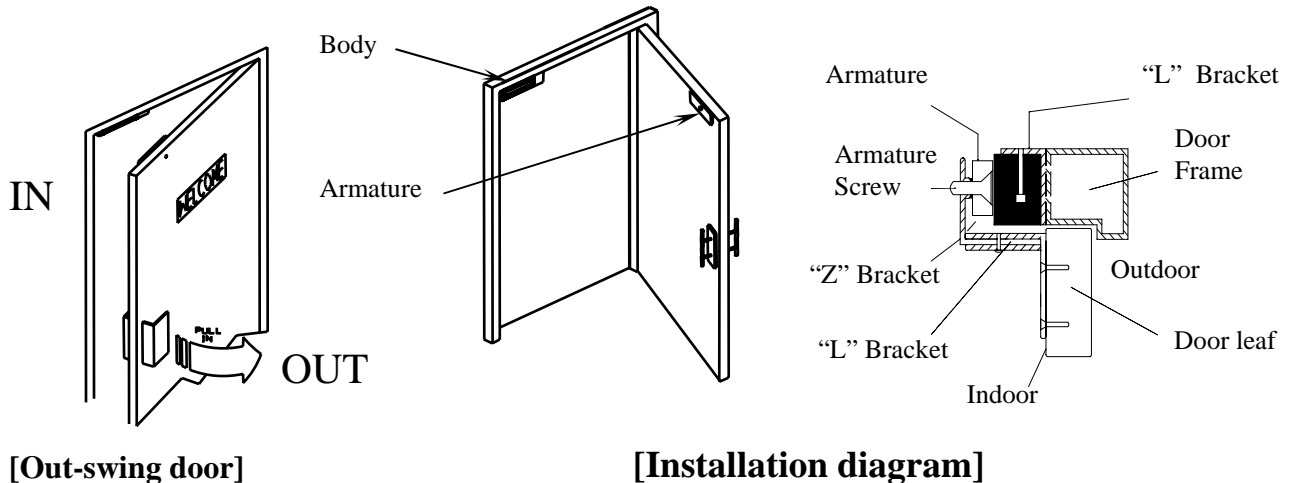
170X41.5X20.5(mm)

Electromagnetic Lock Specification:

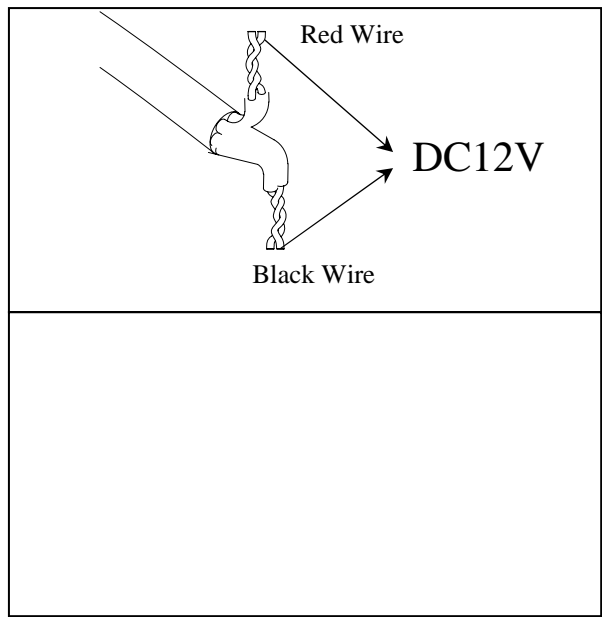
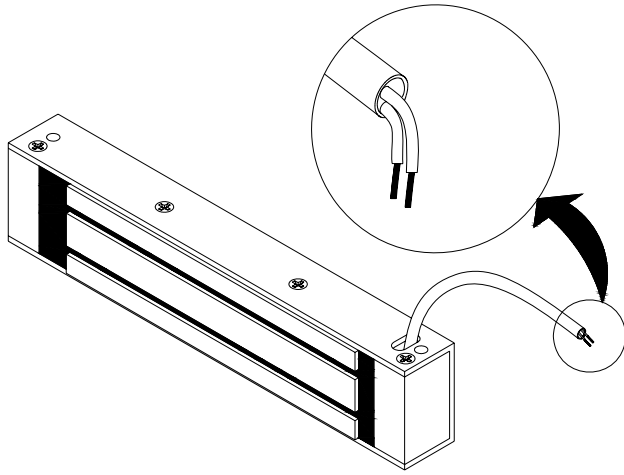
	EL-350 Series	Notation
Power supply	DC 12V	
Operation current	380mA/12VDC	
Door sensor	NC(Only for EL-350ST model)	Reed switch
Application	Out-swing door and In-swing door	
Holding forces	350lbs(180Kg)	
Operation temperature	35°C ± 5°C (inside air temperature 30°C)	
Warranty	The warranty is 1 years for normal using	
Weight	1kg	

Installation instruction :

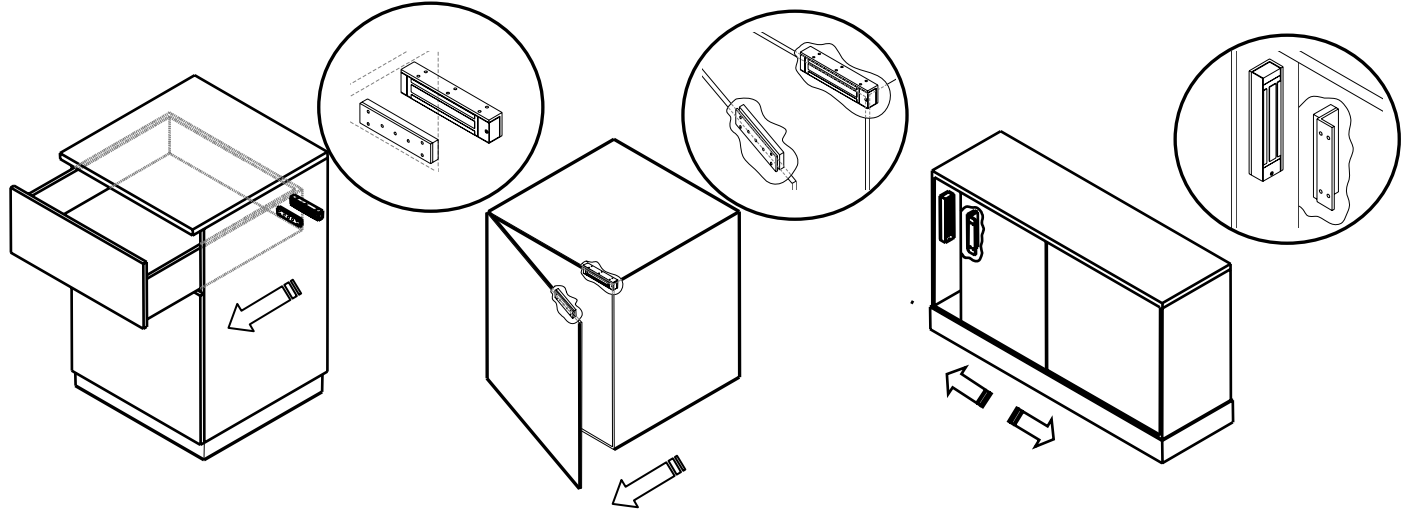
When installing magnetic lock user should be sure of type of door used .Magnetic lock is specifically for the use of out-swing door.



[Select the correct voltage]



[For drawer installation diagram]



*Option "L bracket " to be used for fitting

